

WRC

WESTERN ROLLER CORPORATION

*Polyurethane feed tires for the primary
and secondary woodworking industries.*



Trusted for
52 *years.*

Index

Super Drive for Moulders	3 - 10
Super Drive for Planers	11
Super Feed for Power Feeders	12 - 19
Poly Tube	20 - 22
Recovers	23
P2000 Composite Tires	24 - 26



Our Building Located in Bend, Oregon.

Western Roller Corporation has the knowledge and experience to help you match the right product to your application. We feature a variety of polyurethane solutions for your specific needs. Featuring the original replacement systems for the primary and secondary wood processing industry. From Super Drive for Moulders and Planers, Super Feed for Power Feeders and Shapers, and Polytube for various shop solutions we have you covered. We provide high-performance urethane products for Original Equipment Manufacturers, Production Shops, and End Users.

Our products come standard on many new machines offered by the top manufactures in our industry.



Super Drive Replacement Tires

Tire Selection and Application	
Red Tire 95 duro	Generally used for push through moulders. Standard in the primary wood industry for planers, moulders, and rip saw applications. Tire provides less traction but is very durable.
Orange Tire 85 duro	Excellent tire for general hardwood and softwood applications with good grip to wear properties. Less durable than the red tire but has more traction. Good tire selection where multiple applications are selected for the moulder, planer, and rip saws.
Yellow Tire 75 duro	Generally used for Power Feeders utilizing standard hardwood and softwood stock or unfinished sheet goods. Provides a strong grip with minimal wear and is good for small to large production shops. The Yellow tire has been utilized for moulders by manufactures with unique applications.



105T
140 mm OD x 1" wide



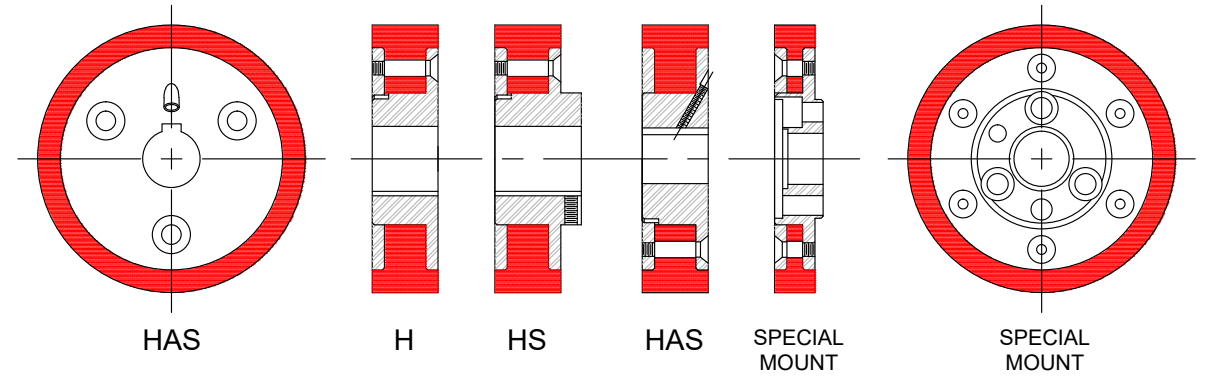
105T
140 mm OD x 2" wide
95 Duro



105T
140 mm OD x 2" wide
85 Duro

Super Drive Hubs

SUPER DRIVE HUB STYLES



Assembly



Super Drive "H" Hub
(no step or setscrew)



Super Drive "HS" Hub
(step with setscrew)



Super Drive "HAS" Hub
(no step with an angled setscrew)



Super Drive "Bolt On"
(hub mounts directly to spindle)



**Weinig Composite
Super Drive "Bolt On"**
(hub mounts directly to spindle)



**Kentwood, LMC Composite
Super Drive "Bolt On"**
(hub mounts directly to spindle)

MOULDERS

MOULDERS

Popular Hub Sizing Chart

Kentwood, Weinig, LMC, SCMI Hub Tooling

Hub Series	Bore	Key	Hub Widths					
			3/8"	3/4"	1"	1-1/4"	1-1/2"	2"

Highspeed Super Drive Options

103HAS	50mm	10mm								.
--------	------	------	--	--	--	--	--	--	--	---

Standard Super Drive Hub Options

105HAS	30mm	10mm								.
105HAS	35mm	10mm		.						
105HAS	35mm	10mm			.					
105HAS	35mm	10mm				.				
105HAS	35mm	10mm					.			
105HAS	35mm	10mm						.		
105HAS	35mm	10x8mm							.	

Narrow Bolt On Super Drive Options (Stackable)

106H	25mm	NO KEY		.						
106H	30mm	NO KEY		.						
106H	30mm	NO KEY		.						
106H	35mm	NO KEY	.							
106H	35mm	NO KEY		.						
106H	35mm	NO KEY		.						
106H	35mm	NO KEY		.						
106HAS	35mm	10X8mm		.						
106HAS	35mm	10mm		.						

Wide Bolt On Super Drive Hub Options (Stackable)

108H	30mm	NO KEY			.					
108H	30mm	NO KEY								.
108H	30mm	NO KEY								.
108H	35mm	NO KEY			.					
108H	35mm	NO KEY			.					
108H	35mm	NO KEY								.
108H	35mm	NO KEY								.
108HAS	50mm	10mm								.

Miscellaneous Hub

110HAS	30mm	10X8mm		.						
110HAS	30mm	10X8mm								.

Corresponding Popular Tire Sizing Chart

Kentwood, Weinig, LMC, SCMI Hub Tooling

Tire OD Options									Popular Brands
120mm	130mm	140mm	150mm	152mm	160mm	170mm	206mm	222mm	

Highspeed Super Drive Options

							.	.		Kentwood, Weinig, LMC
--	--	--	--	--	--	--	---	---	--	-----------------------

Standard Super Drive Options

			Kentwood, Weinig, LMC
				Kentwood, Weinig, LMC
				Kentwood, Weinig, LMC
				Kentwood, Weinig, LMC
				Kentwood, Weinig, LMC
			Kentwood, Weinig, LMC
			SCMI

Narrow Bolt On Super Drive Options (stackable)

					WADKIN
					WEINIG #1
					WEINIG #2
		.								Kentwood, LMC #1
					Kentwood, LMC #1
					Kentwood, LMC #2
					SCMI #1
					SCMI BOLT ON
					Kentwood, Weinig, LMC

Wide Bolt On Super Drive Options (stackable)

					WEINIG BOLT ON
				WEINIG BOLT ON #1
				WEINIG BOLT ON #2
					Kentwood, LMC #1
					Kentwood, LMC #2
				Kentwood, LMC #1
				Kentwood, LMC #2
				Kentwood, LMC #1

Miscellaneous Tire

.		.								SCMI
.		.								SCMI

MOULDERS

MOULDERS

Standard Hub Sizing Chart

Hub Series	Bore	Key	Super Drive Hub Width				
			3/4"	1"	1-1/4"	1-1/2"	2"
101HS	3/4"	3/16"					.
101HS	1"	1/4"					.
101HS	20mm	4mm					.
101HAS	25mm	8mm					.
101HS	30mm	10mm					.
102H	3/4"	3/16"					.
102H	1-1/4"	1/4"					.
102HAS	1-1/4"	1/4"					.
103H	1"	NO KEY					.
103H	1-3/4"	NO KEY					.
103H	1-15/16"	1/2"					.
103H	2-3/8"	NO KEY					.
103H	3"	3/8"					.
103HS	1"	1/4"					.
103HS	1-15/16"	1/2"					.
103HAS	1"	1/4"					.
103HAS	2-1/2"	5/8"					.
103HAS	3"	1/2"					.
104H	1-1/2"	1/4"					.
104H	1-1/2"	3/8"					.
104H	1-5/8"	3/8"					.
104H	1-3/4"	NO KEY					.
104HS	1"	1/4"		.			.
104HS	1"	1/4"				.	.
104HAS	25mm	8mm					.
104HAS	1"	1/4"				.	.
104HAS	1"	1/4"					.
104HAS	1-3/8"	3/8"					.
104HAS	1-7/16"	3/8"					.

• Custom Bevel can be machined for orange and red tires based on your specific application

Corresponding Standard Tire Sizing Chart

Tire OD options													
89mm	102mm	110mm	120mm	125mm	130mm	140mm	150mm	152mm	160mm	170mm	184mm	206mm	222mm
.	.												
.	.												
.	.												
.	.												
.	.												
								
								
	
												.	.
												.	.
												.	.
												.	.
												.	.
									.	.	.		
									.	.	.		
									.	.	.		
									.	.	.		
									.	.	.		
									.	.	.		
									.	.	.		

MOULDERS

MOULDERS

Standard Hub Sizing Chart

Hub Series	Bore	Key	Hub Widths				
			3/4"	1"	1-1/4"	1-1/2"	2"
105H	1"	1/4"		•			
105H	1"	1/4"					•
105H	30mm	8mm					•
105H	1-1/4"	NO KEY		•			
105HS	1"	1/4"		•			
105HS	30mm	1/4"				•	
105HS	1-3/16"	1/4"					•
105HS	1-1/4"	1/4"		•			
105HS	1-1/4"	5/16"					•
105HS	1-7/16"	3/8"					•
105HAS	1"	1/4"					•
105HAS	30mm	8mm					•
105HAS	1-1/4"	1/4"					•
106H	1"	NO KEY	•				
106HS	1"	1/4"	•				
106HAS	1"	1/4"	•				
106HAS	30mm	8mm	•				
106HAS	1-1/4"	1/4"	•				
108H	30mm	8mm					•
108HAS	1"	1/4"					•
108HAS	1-5/8"	3/8"					•
108HAS	2"	1/2"					•

Corresponding Standard Tire Sizing Chart

Hub Series	Bore	Key	Tire OD options											
			130mm	140mm	150mm	152mm	160mm	170mm	184mm	206mm	222mm			
105H	1"	1/4"	•	•	•	•	•	•						
105H	1"	1/4"	•	•	•	•	•	•				•		
105H	30mm	8mm	•	•	•	•	•	•				•		
105H	1-1/4"	NO KEY	•	•	•	•	•	•						
105HS	1"	1/4"	•	•	•	•	•	•						
105HS	30mm	1/4"		•			•							
105HS	1-3/16"	1/4"	•	•	•	•	•	•				•		
105HS	1-1/4"	1/4"	•	•	•	•	•	•						
105HS	1-1/4"	5/16"	•	•	•	•	•	•				•		
105HS	1-7/16"	3/8"	•	•	•	•	•	•				•		
105HAS	1"	1/4"	•	•	•	•	•	•				•		
105HAS	30mm	8mm	•	•	•	•	•	•				•		
105HAS	1-1/4"	1/4"	•	•	•	•	•	•				•		
106H	1"	NO KEY		•	•		•	•						
106HS	1"	1/4"		•	•		•	•						
106HAS	1"	1/4"		•	•		•	•						
106HAS	30mm	8mm		•	•		•	•						
106HAS	1-1/4"	1/4"		•	•		•	•						
108H	30mm	8mm												
108HAS	1"	1/4"												
108HAS	1-5/8"	3/8"												
108HAS	2"	1/2"												

MOULDERS

MOULDERS



HAS



BOLT ON



HS



HS



3/8" BOLT ON



3/8" BOLT ON

Standard Hub and Tires for Planers

- Decreases trim loss due to excessive end split
- Eliminate raised grain
- Reduces roller split and burn marks
- Eliminate slippage (gives a better finish through more uniform knife cuts per inch)
- Decrease maintenance cost by eliminating excessive wear and tear on the feed works
- Eliminate costly custom coverings, bonding problems and expensive freight bills incurred with other types of soft rollers
- Super Drive hubs are purchased only once
- Convenient in-stock replacement tires
- Unique split hub and tire system allows for quick installation of rollers
- Available in in 10-1/4" to 16" Split and non-split styles



Tire Series	Tire OD	Tire Width	Hub Series
310T	10-1/4"	3-1/4" Split Tire	310H
312T	12-1/8"	3-1/2" and 5-3/4" Split or Non-Split Tire	312H
414T	14-1/8"	4" Split or Non-Split Tire	414H
316T	16"	3" Non-Split Tire	316H

Please inquire about pricing for Super Drive Planer Hubs

Super Feed Tires for Power Feeders

Tire Options	
Yellow Tire 70 Duro	Excellent selection for Power Feeders utilizing standard hardwood and softwood stock or unfinished sheet goods. Provides a strong grip with minimal wear and is good for small to large production shops. The Yellow tire have been utilized for moulders by manufactures with unique applications.
Green Tire 60 Duro	All the benefits of the yellow tire for Power Feeder but used where additional grip is required. Good wear to grip ratio for small to medium production facilities.
Blue Tire 50 Duro	Best tire selection for use with Power Feeders where the working surface is slick or difficult to feed laminate, melamine, finished, and UV protected products are reasons why you might choose the 50 duro tire.

Replacement Tires Sizes

Super Feed for Power Feeders consist of the SFH (HUB) and SFT (TIRE). Purchase the hub once and interchange tires as needed.

Our replacement tire design and tough materials offer you the most-effective replacement system available. Super Feed tires outperform and outlast OEM tires providing long life for high production shops.

SFT Tire Series	OD	Width
SFT-1, 2, 3	120mm	2"
SFT-1, 2, 3	4-1/8"	1-7/8"
SFT-1, 2, 3	4-5/8"	1-3/4"
SFT-1, 2, 3	5-1/8"	1-3/4"
SFT-1, 2, 3	120mm	46mm
SFT-1, 2, 3	4-1/4"	46mm

Bevel Bore	SFT Series	OD	Width
	SFT-COMATIC RO/RU	112mm	60mm
	SFT-COMATIC RO/RU	120mm	60mm
	SFT-FELDER	120mm	60mm
	SFT-STEFF	100mm	50mm

We stock single and double wide (not standard) polyurethane rollers in a variety of diameters and hardness to suit your specific needs.



Super Feed Replacement Tires for Power Feeders



SFH-2, Super Feed Hub and Tires Featured on a Comatic DC40

Replacement Hub Sizes			
Series	Bore	Key	Bolt Width
SFH-1	35mm	-	47mm
SFH-2	Spline	-	-
SFH-3	17mm	5mm	-



SFH-1 Super Feed Hub



SFH-2 Super Feed Hub



SFH-3 Super Feed Hub

Super Feed Composite Tires for Power Feeders

Composite Tire System					
Tire Series	Bore	Key	Bolt Width	OD	Width
PSFH-1	35mm	-	47mm	120mm	60mm
PSFH-2	Spline	-	-	120mm	60mm
PSFH-4	15mm	5mm	-	89mm	51mm
PSFH-4A	15mm	-	29mm	89mm	51mm
PSFH-7	22mm	-	32mm	80mm	30mm
PSFH-7A	22mm	-	32mm	80mm	54mm
PSFH-9	28mm	-	41mm	101mm	51mm



PSFH-1



PSFH-2

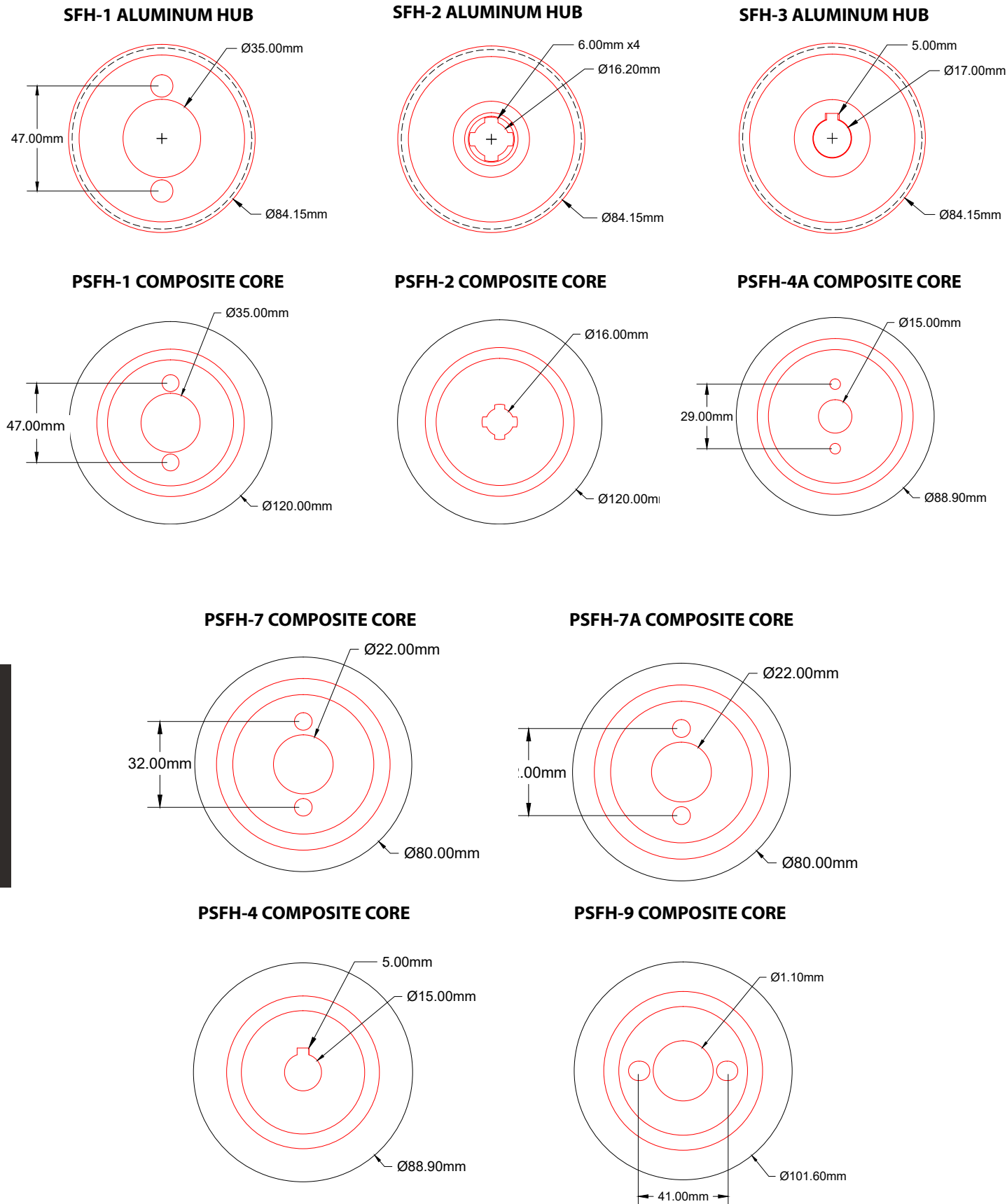


PSFH-9



PSFH-7 / PSFH-7A

Power Feeder Hub Sizing Chart



Popular Power Feeder Brands and Models

Our system fits the following makes and models.

Brand	Model Number
AMACRO	
AZETA	304, 308, 404, 408
BIMEX	304, 308, 404, 408
BRIDGEWOOD	PF-32, PF-34, PF-44, AP48
CANTEX	
CHAMP FOND	FD-808
CO-MATIC	M3 BABY FEEDER, AF32, AF308, 408, 54 TF36, 46, 406, 66, AF-04, AF34, 44, 38, 48, 68, 30 40, MX38, MX48, AFC3 EZ 300, 30, 400, 40 RO-120, RU-120
CONWORLD	FF-320, FF-340, 380, 440, 480, FF-300, 400
CRAFT TECH	648, A5622, K3488 W7853, W71320
DANCKAERT	
DELTA	36-865, 34-985, 36-850, 36-840, 36-852, 36-855, 36-856, 34-994, 34-995, 36-836, 36-839
DERDA	DMSF 304, 308 DMSF 404, 408 DMSF 504, 508
ELU	MVA-34, MVA-29, MVA-64
EURO UNIPAR	
EUROPA	JUNIOR 3/6 340, 440, 540, 380, 480, 580, 300V, 400V, 500V 300VS, 400VS, 500VS 340, 380, 300V, 300VS 300C, 340C, 380C 400C, 440C, 480C 500C, 540C, 580C
EXTREMA	SEE: CO-MATIC
EVANS	425, 1400
FELDER	F-32, F-34, F-38, F-48, VARIO FEED 3, 4
FESTO	SCHUBOMAT, SP4, SP4R, SP4-2VAS MOULDER, VAF-0017

Super Feed can be matched to over 65 Brands and hundreds of models.

Solutions for discontinued and hard to source power feeders.

We can source other Brands not listed here, just give us a call.

For replacement feeder tires not shown or listed call our sales department. We'll be happy to discuss your application and recommend the proper tire.

POWER FEEDERS

POWER FEEDERS

Popular Power Feeder Brands and Models

Brand	Model Number
FESTO	SCHUBOMAT, SP4, SP4R, SP4-2VAS MOULDER, VAF-0017
FOREST CITY	FCT-2, FCT-8
FROMMIA	850, 487
GRIGGIO	GM3/32, GM4/34, GA4/38, GA8/48, GV3, GV4, GA6/68 G-1128, G-1129, G-4176, G-1778
HOLZ	1978-3, 1978-4, 1980-483 BELT Compatible 22, 43, 83
HOLZ-HER	1112, 1117, ET & ETZ-117, EA -8402, ET-2
HOLZMA	
IKEYA	
INCOR	
JET	
KING	W-2, W-4
KIRCHFELD	
KYOWA	
LOBO	ST-321FD, ST-301, 303FD
MAGGI / STEFF	OM 312:2, STEFF 32, 2032, OM 314, 414, 318, OM 418 Belt Kit Compatible 2032, 2034, 2038/CI STEFF 38, 48, 64 STEFF 2034, 2038, 2044, 2048, 2068 2033 (TIRE ONLY) VARIOSTEFF 3, 4
MARTIN	
MAX	
MEC	4/V, 8/V, 3/R, 4/R MEC/C
NANDENA	
NORTHWOOD	NW-43
OLIVER	
PERTICI / UNIVER	1802, 2900, 2904, 250, 254, 6800, 6802 508, 543, 583, 583M 251S, 251R 930, 931, FC-71S 1400, 1800, 1800M, 6800 504, 508, 508M, 900V, 04V & K

Popular Power Feeder Brands and Models

Brand	Model Number
POWERMATIC	4V3, 8V3, Phase One, PH-3, PF41
ROCKWELL	UNIFEEDER 4V, 8V
ROMA	104, 110
SAMCO	EUROUNO
SANDEN	110
SCMI	4V, 8V ELECTRO ADDA, FC 80 B
SECO	SK-30, SK-32FD, 40FD
SEN KAE INDUSTRIAL	SKI-1340, SKI-2380, 2340 SKI-3340, 3440, 3380, 3480, 3381, 3300, 3400, 4300, 4340, 4380, 4440, 4480
SHOP FOX	
SILVER	
STARMARK	MAXIFEEDER
STEGHERR ARCH FEEDER	80F2
SUNHILL	
TANNEWITZ	
UNIVER	
YAMAI	
VEREHAUBESCH	
WADKIN	508, 900V, 904V
WOODMAN	FU320
WOODTEK	809-234, 816-826, 035-650, All 1HP MODLES
ZANGHER & BOSCHETTI	BH 1001



Belt Conversion Kit

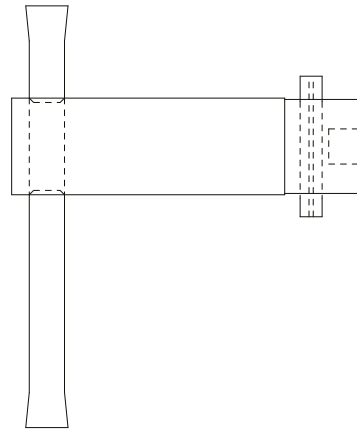
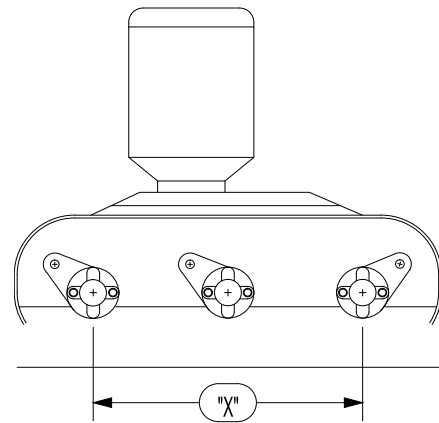
Solid polyurethane belts are durable and available to fit the most popular 3 stock feeders. Our new design assures the very best control for feeding short work pieces.

When converting a roller feeder to a belt feeder, measure dimension "X" (See below) with no tension on the roller. Apply the measurement to the table below to identify your part number.

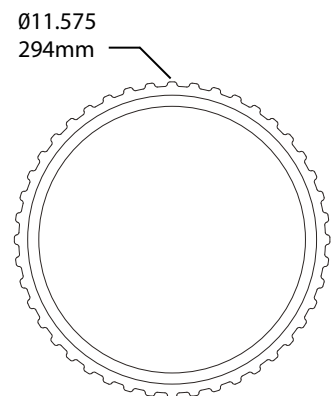
Brand	Style	Dimension "X"
1001-01A	Nubbed Belt	Between 270mm and 280mm
1001F-01A	Flat Belt	Between 270mm and 280mm
1002-01A	Nubbed Belt	Between 254mm and 264mm
1002F-01A	Flat Belt	Between 254mm and 264mm



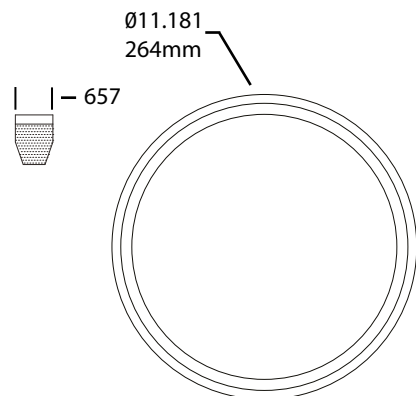
Belt Conversion Kit Featured on a Steff 2034 Power Feeder



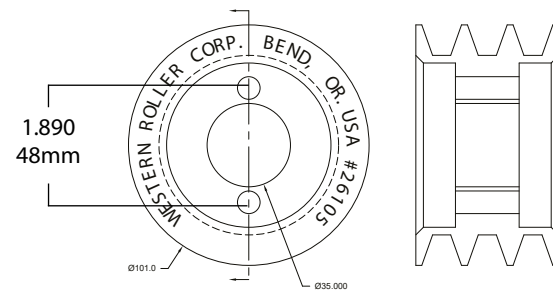
Belt installation tool



SFB - 1001 - Shown
SFB - 1001F - (No nubs)



SFB - 1002 - Nubs
SFB - 1002F - Flat (No nubs) Shown



Each Belt Conversion Kit includes: (3) belts, (3) pulleys, (1) mounting tool, hardware, and instructions.

Poly Tube

Poly Tube is versatile and can be applied to hundreds of applications. Choose from 5 standard hardnesses and 728 size combinations to develop a custom tire application for your equipment. Poly Tube can be cut in any 1/4" lengths up to 12" long to accommodate flanged bushings, shafts, keyed cores, hubs, and much more. Our configurations result in over 200 thousand size and durometer combinations.

- Poly Tube can be stacked to span multiple feet in length for any size over our standard 12" maximum.
- Select an outside and an inside diameter, overall width and durometer to finalize your part.
- Minimum wall thickness is 3mm.
- Our customers use Poly Tube on edgebanders, shaper sanders, power feeders, and much more.
- Poly Tube comes standard on many new machines offered by the top manufacturers in our industry.
- Urethane rods are offered in 23 different outside dimensions in 12" lengths.



Sizing chart see page 21-22



Poly Tube Featured on Shape and Sand by Larick

	Outside Diameter											
	25mm	30mm	35mm	38mm	45mm	51mm	54mm	57mm	62mm	64mm	70mm	
Inside Diameter	0
	6mm
	9mm
	10.5mm
	13mm
	15mm
	15.5mm
	16mm
	19mm
	20mm
	21mm
	22mm
	25mm
	28mm
	30mm
	32mm
	35mm
	38mm
	39mm
	40mm
	41mm
	42mm
	44.5mm
	46mm
	47mm
	48mm
	49mm
	51mm
	53mm
	56mm
	57mm
	60mm
	63mm
	66mm
	69mm
	70mm
	74mm
	75mm
	80mm
	84mm
	86mm
	89mm
	94mm
	97mm
	101mm
102mm	
106mm	
108mm	

Sizing chart dimensions are nominal. It is the responsibility of our customer to determine the usability of the product.

Outside Diameter											
73mm	76mm	80mm	85mm	92mm	96mm	105mm	111mm	114mm	127mm	152mm	165mm
.
.
.
.
.
.
.
.
.
.
.
.
.
.
.
.
.
.
.
.
.
.
.
.
.
.
.
.
.
.
.
.
.
.
.
.
.
.
.
.
.
.
.
.
.
.

Recovers

Western Roller Corporation started recovering moulder and planer hubs with urethane over 50 years ago. The process has been perfected and is uniquely suited for the primary and secondary wood processing industry.

The process starts by stripping the hub of old urethane; wash and rinse with solvent to remove debris and oil; sandblast the bonding surface with an aggressive media; measure profile surface; spray bonding agent to specific thickness; preheat the part, and chemically bond urethane to the surface of hub.

We are a trusted partner for recovers and have the knowledge to discuss your equipment and how our products can better accommodate your application.

A quick turnaround and reliable product is what we promise.

We recover Hubs, Shafts, Idlers, Pads and more for Moulders, Rip Saws, Sanders, Edgebanders, Power Feeders, Panel and Sheet Processing Equipment, Optimizers, Shape and Sand, Lock Miter, and Thickness Planers.



Planer and Rip Hubs pre-recovering process.



Planer, Rip, and Moulder hubs processed.



Mereen-Johnson Model 524-DDC/SR Select-A-Rip™ Edging Multiple Rip Saw

Western Roller Corporation can recommend a replacement system to phase out your recover program.

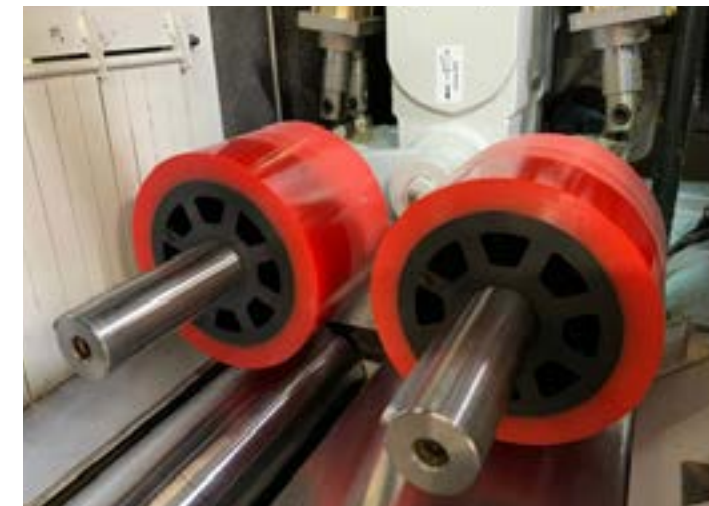
Contact us for more information.

Custom Composite Tire System

Tires are cast and cut to length to adapt to your application and machine specifications. We cast the bore and key up to 12" in length, providing a versatile and affordable hub/tire option. The core is manufactured from a hard and durable urethane with a chemically bonded softer cover. This product is dependable and used in the secondary wood processing industry on moulders, rip saws, multiscore panel saws, and dozens of other standardized equipment on the market.

Determining your size is simple. Using chart on page 25-26, choose your core and cover diameter; bore and key size; width and tire hardness, then give us a call for pricing. We will provide you with a part number and quote.

- Custom tire at standard prices.
- Economic and engineering advantages.
- Flexibility to create a custom roller from our standard tooling.
- One and done design.
- Series P25, P38, P57, P80, P111, P141, and P171 are solid core designs.
- Series P110, 140, and 170 are spoked core designs.
- Set screws, recesses, bevels, and bearings can be incorporated into the composite tire system.



Series P110 140mm OD x 2" wide 35mm bore and 10mm key featured on a Kentwood Moulder



Multiscore Replacement Tires (with setscrew)

P2000 Solid Hub Sizing Chart

Core Diameter			Cover Diameter		Max width
Series	Milimeters	Inches	Milimeters	Inches	Inches
P25	25mm	0.98"	32mm	1.26"	12"
			45mm	1.77"	12"
			51mm	2.01"	12"
P38	38mm	1.50"	51mm	2.01"	12"
			57mm	2.24"	12"
			62mm	2.44"	12"
			64mm	2.52"	12"
P57	57mm	2.24"	70mm	2.76"	12"
			73mm	2.87"	12"
			76mm	2.99"	12"
			80mm	3.15"	12"
P80	80mm	3.15"	85mm	3.35"	12"
			92mm	3.62"	12"
			96mm	3.78"	12"
			100mm	3.94"	12"
			105mm	4.13"	12"
P111	110mm	4.33"	114mm	4.44"	12"
			120mm	4.72"	12"
			127mm	5.00"	12"
			130mm	5.12"	6"
			140mm	5.51"	12"
P141	140mm	5.51"	152mm	5.90"	12"
			165mm	6.50"	12"
			170mm	6.69"	12"
			181mm	7.13"	12"
P171	170mm	6.69"	190mm	7.48"	5-1/2"
			190mm	7.48"	5-1/2"
			200mm	7.87"	12"
			205mm	8.07"	12"
			210mm	8.27"	2"
			216mm	8.5"	6"
			220mm	8.66"	7"
			230mm	9.06"	9"
254mm	10"	12"			
305mm	12.01"	12"			

COMPOSITE TIRES

P2000 Spoked Hub Sizing Chart

Core Diameter			Cover Diameter		Max width
Series	Milimeters	Inches	Milimeters	Inches	Inches
P110	110mm	4.33"	127mm	5.00"	12"
			130mm	5.12"	6"
			140mm	5.51"	12"
			152mm	5.90"	12"
P140	140mm	5.51"	165mm	6.50"	12"
			170mm	6.69"	12"
			181mm	7.13"	12"
			190mm	7.48"	5-1/2"
P170	170mm	6.69"	190mm	7.48"	5-1/2"
			200mm	7.87"	12"
			205mm	8.07"	12"
			210mm	8.27"	2"
			216mm	8.5"	6"
			220mm	8.66"	7"
			230mm	9.06"	9"
			254mm	10"	12"
			305mm	12.01"	12"

Available Bore & Key	
Bore	Key
5/8"	3/16"
3/4"	3/16"
22mm	NO KEY
25mm	NO KEY
1"	NO KEY
1"	1/4"
1-1/8"	NO KEY
1-1/8"	5/16"
30mm	8mm
30mm	10mm
1-1/4"	1/4"
1-1/4"	3/16"
35mm	10mm
1-7/16"	1/4"
1-1/2"	3/8"
40mm	12mm
1-5/8"	NO KEY
1-3/4"	3/8"
1-15/16"	NO KEY
1-15/16"	1/2"
50mm	NO KEY
50mm	10mm
50mm	12mm
1.995"	NO KEY
2"	NO KEY
2"	1/2"
2-7/16"	NO KEY
2.5"	NO KEY

Available Bore & Key	
Bore	Key
5/8"	3/16"
3/4"	3/16"
22mm	NO KEY
25mm	NO KEY
1"	NO KEY
1"	1/4"
1-1/8"	NO KEY
1-1/8"	5/16"
30mm	8mm
30mm	10mm
1-1/4"	1/4"
1-1/4"	3/16"
35mm	10mm
1-7/16"	1/4"
1-1/2"	3/8"
40mm	12mm
1-5/8"	NO KEY
1-3/4"	3/8"
1-15/16"	NO KEY
1-15/16"	1/2"
50mm	NO KEY
50mm	10mm
50mm	12mm
1.995"	NO KEY
2"	NO KEY
2"	1/2"
2-7/16"	NO KEY
2.5"	NO KEY

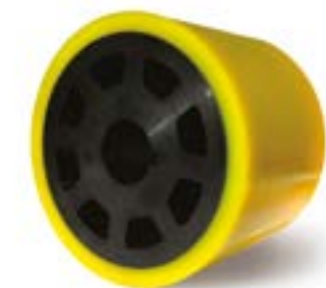
COMPOSITE TIRES



70 Duro Multiscore Replacement Tire (With Set Screw)



P110 Series for Kentwood, Leadermac, Weinig Moulder



P110 Series for Kentwood, Leadermac, or Weinig Moulder



Tire Feed Systems for the Primary and Secondary Wood Working Industry

Return Conveyors | Wide Belt Sanders Trimming Machines | Optimizers | Profilers
Cross-Cut Saws | Thru-Feeding Chopsaws | Hold Down or Idler Systems | Material Handling
Corrugated Box Machinery | Edge Finishing | Edgebanders | Finger Jointer | Lateral Chain Feeders
Moulders | Profile Moulders | Highspeed Moulders | Push Feed and Thru Feed Moulders
Chain and Pad Systems | Glulam Planers | Surface Planers
Shape and Sands | Shapers | Band Saw Feeders | Rip Saws | Lock Miter Machine
Side-Matchers | Tenoners | Power Feeders | Thickness Planers | Planer/Molders | Planer/Matchers



63393 Nels Anderson Rd, Bend, OR 97701

Toll Free: 800-541-2317

Phone: 541-382-5643

Fax: 541-382-0159

Copyright 2024